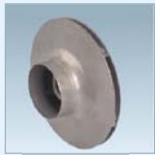


CPS 系列不锈钢离心泵

SERIES STAINLESS STEEL CENTRIFUGAL PUMPS



WORKING CONDITIONS

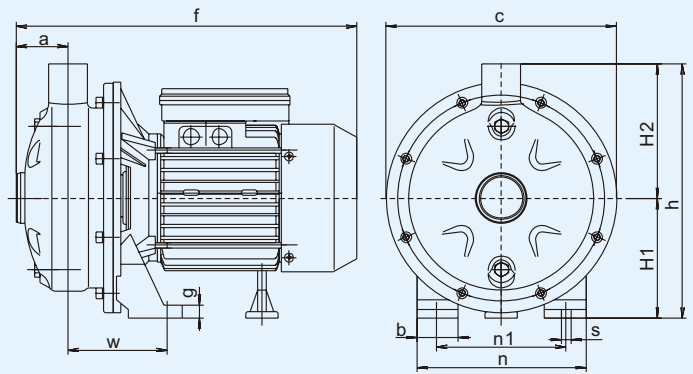
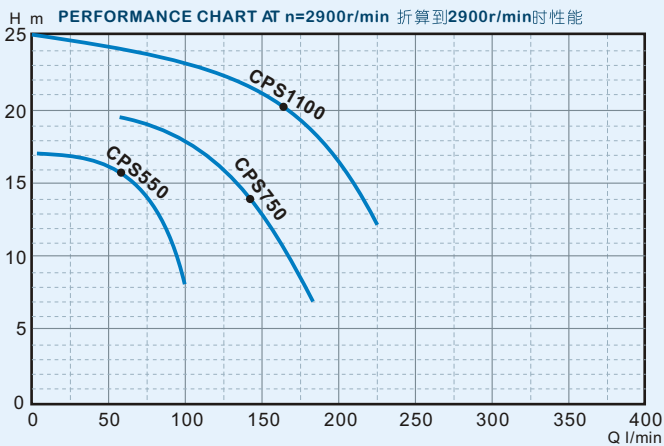
Max Temperature of Fluid up to +80°C
 Max Pressure 10bar,
 Max Ambient Temperature up to 40°C

工作条件:

最高流体温度为80℃
 最大可承受的压力10bar
 最高环境温度40℃

CPS series stainless steel centrifugal pumps, it's suitable for both domestic and industrial applications to convey clean liquids and tightly-aggressive chemical fluids. the hydraulic characteristic is lower head and middle capacity.

CPS 系列为不锈钢离心电泵, 适用于家庭、农户、企事业给排水, 用于输送清水或略具腐蚀性的化学流体。其水力特性为低扬程中流量。



DIMENSIONS 安装尺寸

TYPE 型号	Dimensions 外形尺寸 mm												Weight 重量 (kg)		Packing Size 包装尺寸 (mm)			Packing QTY. 包装数量
	a	f	h	H1	H2	C	n	n1	w	b	g	s	NW	GW	L	W	H	20'Cont 20'柜
CPS550	48	317	237	112	125	214	158	120	92	39	12	9	8.2	9.2	345	230	270	1400
CPS750	48	317	237	112	125	214	158	120	92	39	12	9	8.6	9.6	345	230	270	1400
CPS1100	48	327	237	112	125	214	158	120	92	39	12	9	9.6	10.6	355	230	270	1400

TECHNICAL DATA 技术参数

TYPE 型号	Output Power 输出功率		Current 电流 (A)	Capacitor 电容器 (F)	H.max 最高扬程 (m)	Q.max 最大流量 (l/min)	Size 进出口径 (inch)	S.Head 最大吸程 (M)	Total head 总扬程 (m)	Capacity 流量 l/min								
	KW	HP								25	50	75	100	150	200			
CPS550	0.55	0.75	3.7	16	17	100	1.25"X1"	8	17	17	16	13.5	8					
CPS750	0.75	1	4.6	20	18	180	1.25"X1"	8		18	18	17.5	16	12				
CPS1100	1.1	1.5	6.6	30	22	230	1.25"X1"	8		21.5	20.5	20	18	17	5			

标准的电参数及零件配置, 单相220V/50Hz, 不锈钢叶轮、不锈钢轴、马达内置热保护器。可根据客户的其它参数及材料的要求, 制作其它单、三相电压、60Hz、双电压等规格的产品。
Standard data and equipment: single phase 220V/50Hz, stainless steel impeller, and stainless shaft, with terminal protector inside.
 Others model and material such as three phase, 110V, 60Hz, dual voltage, will be available upon request.